



KALAMAZOO RESA CTE REDESIGN UPDATE

Kalamazoo RESA

The Kalamazoo Regional Educational Service Agency exists to transform lives by inspiring educational excellence. We provide a continuum of educational services and support to students, families, school districts, and communities.

What We Do

Early Childhood

Special Education


Instructional Coaching and Support
Services for Local Schools

Administrative Support for Local Schools
(ex: Business Office, HR, Technology)

K-12 Career and Workforce Development
Services

DELIVERING ON OUR COMMITMENT

KRESA is committed to offering CTE programs that:



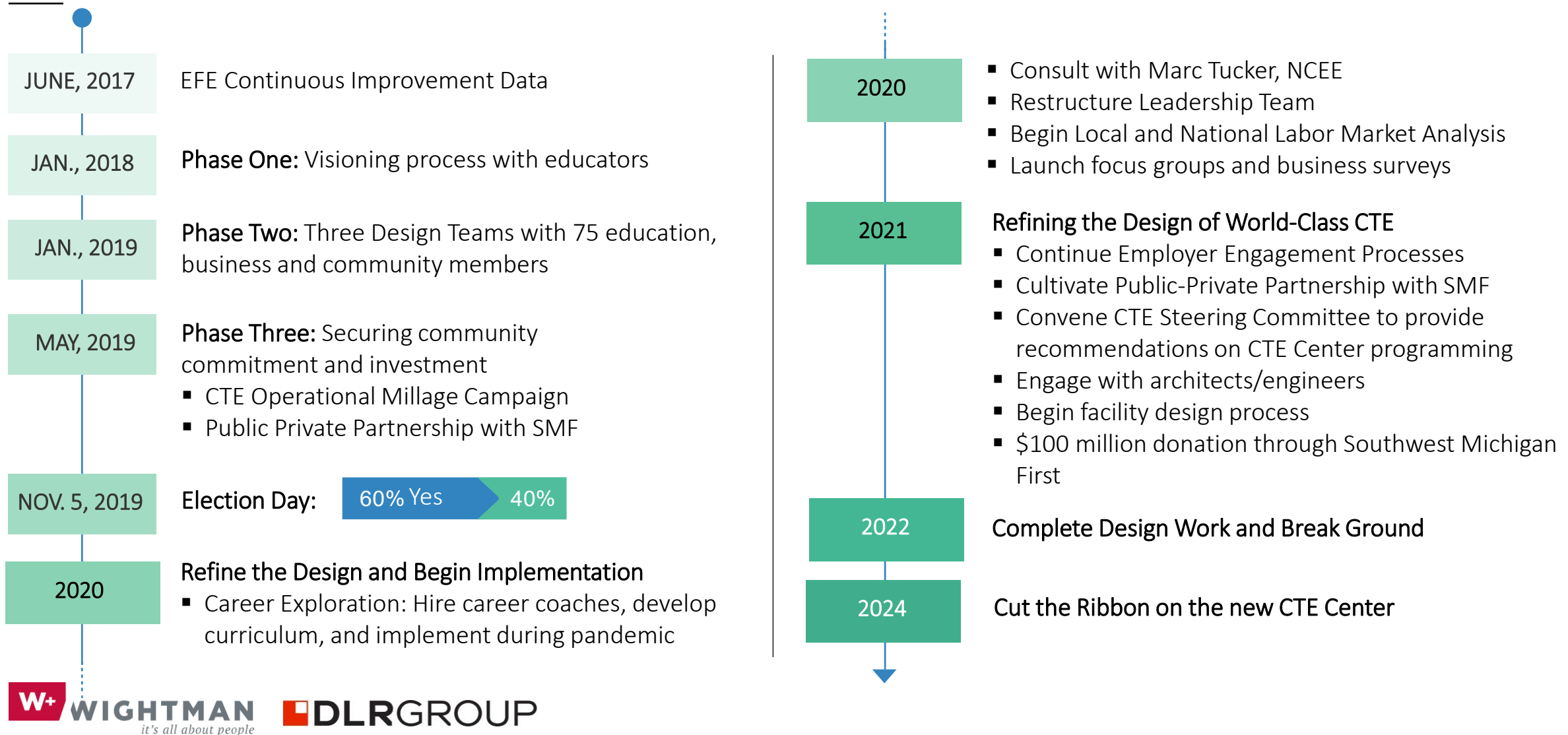
prepare young people for well-paying, high-demand occupations in our local labor market that require less than a four-year degree;

are aligned to anticipated industry trends;

are equitable and inclusive of a diverse student body;

and help students gain skills and competencies required to navigate an ever-changing employment landscape.

Timeline



DELIVERING WORLD-CLASS CTE

DEI Focused

- Inclusive, accessible, safe and welcoming environment for all students
- Staff that is representative of community
- Responsive to individual student needs

Instruction & Academics

- Passionate and well-trained staff that understand industry needs at a deep level
- High-quality instructional team that is representative of the student demographics they serve
- Programs that yield credentials and certifications for in-demand careers in the local area
- Project-based curriculum that focuses on 21st century skill development in collaboration, communication, critical thinking, self-management and problem solving.
- Technical instruction that integrates core academic content (mathematics, science, etc.)

Industry-Led

- Course offerings that reflect high-demand, well-paying occupations in the local labor market
- Curriculum designed to meet the needs of employers

WORLD-CLASS CTE

Teachers

- Understand industry at a deep level
- Representative of community
- Supported with instruction
- Maintain high industry standards
- Mindset focused on success of students
- Model 21st century skills
- Eye to the future

Preparation

- Robust work-based learning offerings for all students
- Intentional career exploration activities offered to students as early as kindergarten
- Educational Development Plans that are relevant to careers
- Seamless transition support from high-school/CTE to appropriate post-secondary programming for those still needing credentials

WORLD-CLASS CTE

Community

- Wraparound supports to students and families designed to reduce barriers to participation and success
- Shared vision with local school districts that yields solution-oriented problem solving around system level challenges that constrain student participation (curriculum, schedules, etc.)
- Clearly articulated pathway alignment with post-secondary partners
- Community of ambassadors for programming
- Integrated into center (Never Go Dark)

Facilities

- State-of-the-art facility and equipment that mimics the world of work
- Facility that uses resources to support broader community goals related to building community-wide prosperity during non-peak school hours
- Centrally located with a strong curb appeal
- Strong transportation support
- Clear and exciting brand and marketing strategy designed to elicit strong support from students, parents and partners

WORLD-CLASS CTE

Outcomes

- Increased overall enrollment
- Increased non-traditional student enrollment within pathways
- Increased enrollment within historically underserved populations
- High number of students earning credentials that align with current and emerging needs of local industry
- High quality, sustainable partnerships with business and community partners
- High number of students securing quality employment post-graduation

Mindset

- Continuous improvement
- Innovation
- Together is Better!

WORKING TOWARDS WORLD-CLASS

DESIGN PROCESS



RESEARCH + BENCHMARKING

- **Research**

- Marc Tucker and the National Center on Education and the Economy (NCEE) - CTE in top performing nations
- Mark Perna, author of *Answering Why: Unleashing Passion, Purpose, and Performance* - core philosophies and messaging in CTE
- Course Selection - Labor Market Benchmarking
 - W.E. Upjohn Institute for Employment Research
 - University of Michigan Youth Policy Lab

- **Facility Tours**

- Cherry Creek Innovation Campus- Centennial, CO
- West-Mec Southwest- Buckeye, AZ
- Canyon View High School- Waddell, AZ
- Genesee Career Institute- Flint, MI
- Muskegon Career Tech Center- Muskegon, MI
- Kent Career Technical Center- Grand Rapids, MI
- Calhoun Area Career Center- Battle Creek, MI
- Steelcase Learning and Innovation Center- Grand Rapids, MI
- Michigan State University STEM Teaching and Learning- East Lansing, MI
- Western Michigan University Richmond Institute for design and Innovation- Kalamazoo, MI
- Stryker World Headquarters- Kalamazoo, MI
- Carpenter & Millwright Apprentice Training Center- Wayland, MI
- KVCC Healthy Living Campus- Kalamazoo, MI

STAKEHOLDER ENGAGEMENT

Over 300 educators, students, business and nonprofit leaders, and community members have been engaged in the design process through:

- Pre-millage visioning and discovery
- Employer focus groups
- CTE steering committee
- Design charrettes
- CTD advisory teams

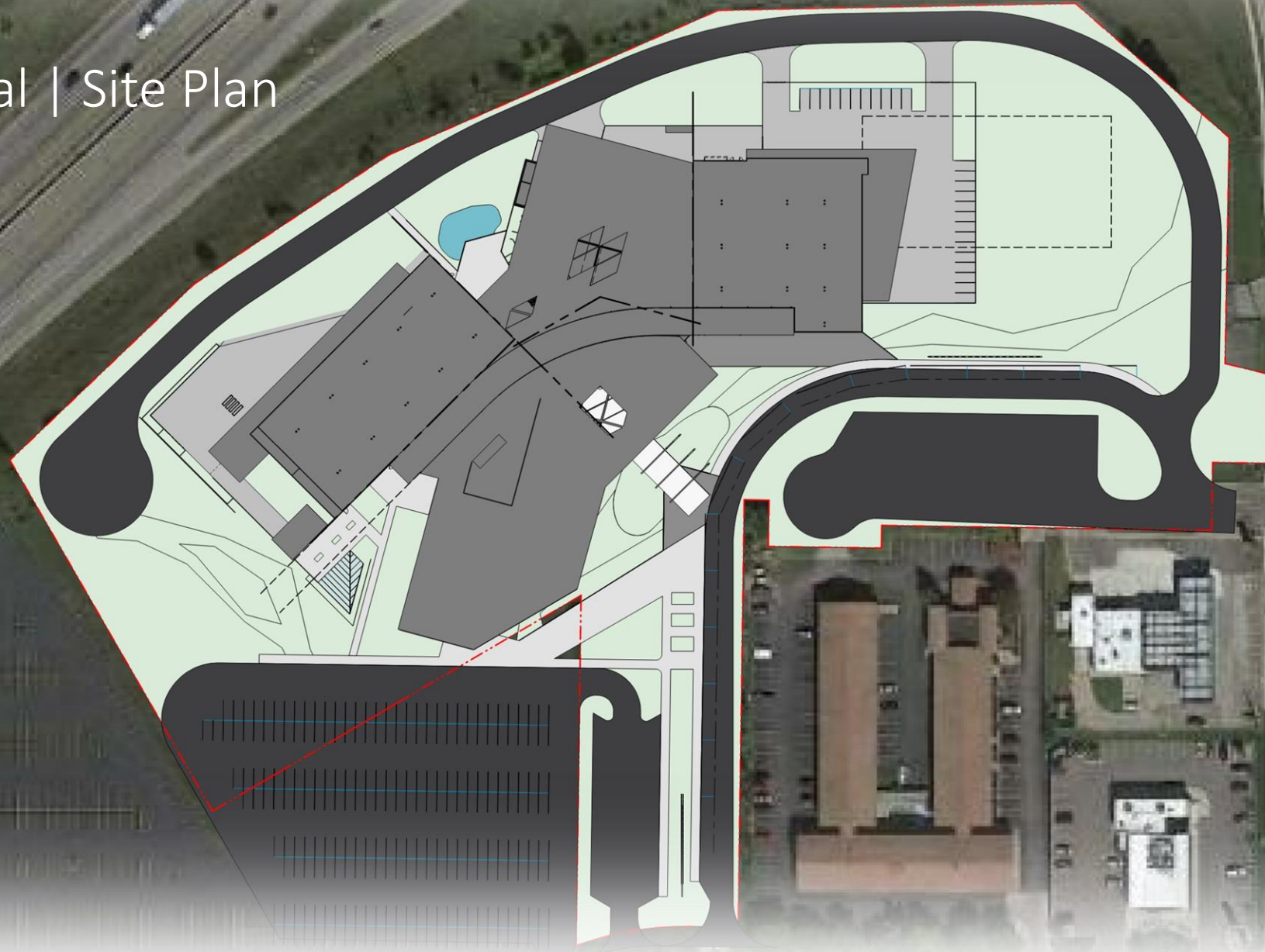
FOCUSED ON THE STUDENT'S
EDUCATIONAL EXPERIENCE

SCHEMATIC DESIGN



Schematic Design

Contextual | Site Plan



Community | Elevations



Community | Elevations



Design Development



KALAMAZOO RESA

Career Connect Campus

Explore | Engage | Experience

Community | Elevations



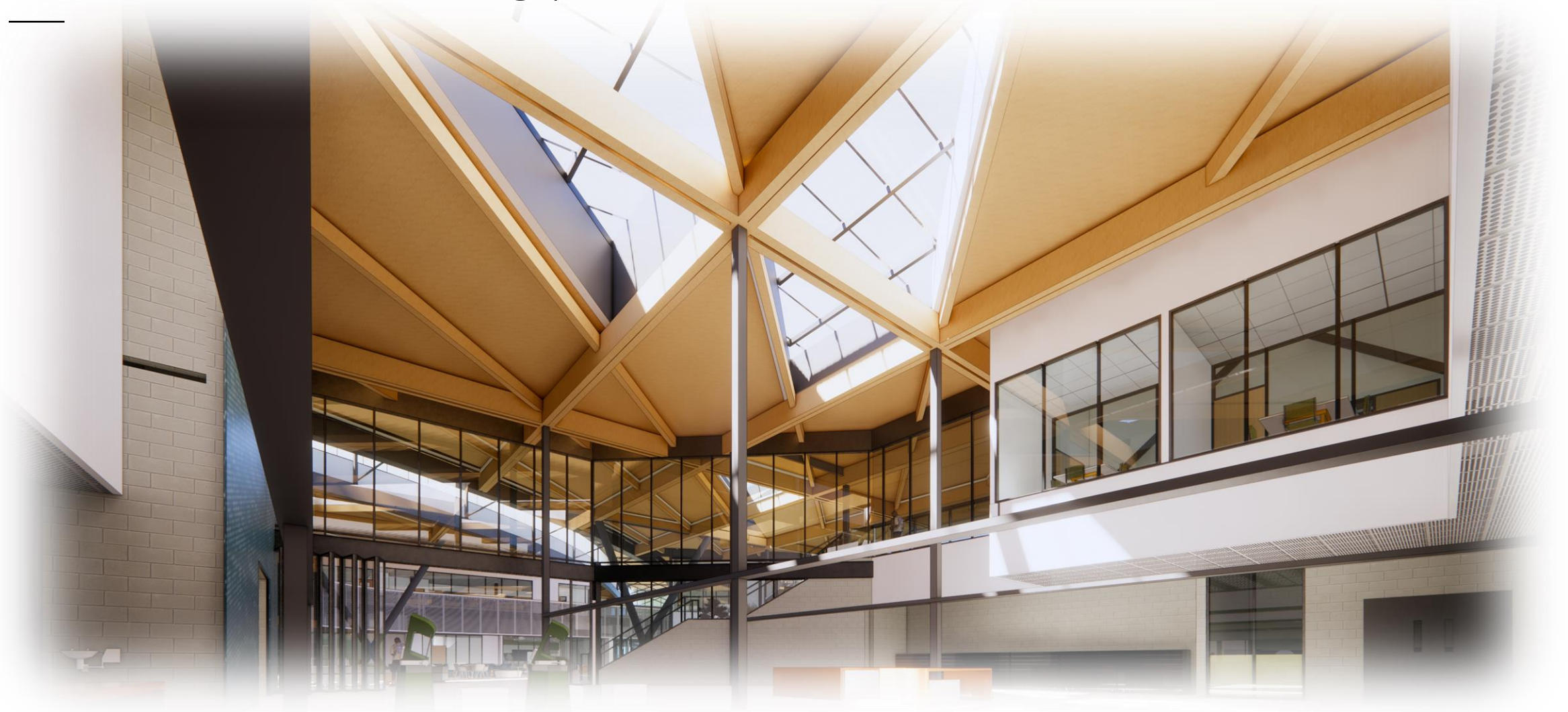
Community | Flyover



Intersections / Partnering | Interior



Intersections / Partnering | Interior



Intersections / Partnering | Interior



Intersections / Partnering | Interior



Intersections / Partnering | Interior



Intersections / Partnering | Interior



Intersections / Partnering | Interior





If you want to go fast
go alone

A high-angle, top-down photograph of a diverse group of people, including men and women of various ethnicities, gathered in a circle. They are all looking upwards towards the camera with positive expressions. Their hands are stacked on top of each other in the center of the group, creating a unified symbol of teamwork and collaboration. The lighting is bright and even, highlighting the textures of their clothing and the skin tones of their hands. The background is slightly blurred, focusing attention on the group and their central gesture.

If you want to go far
go together