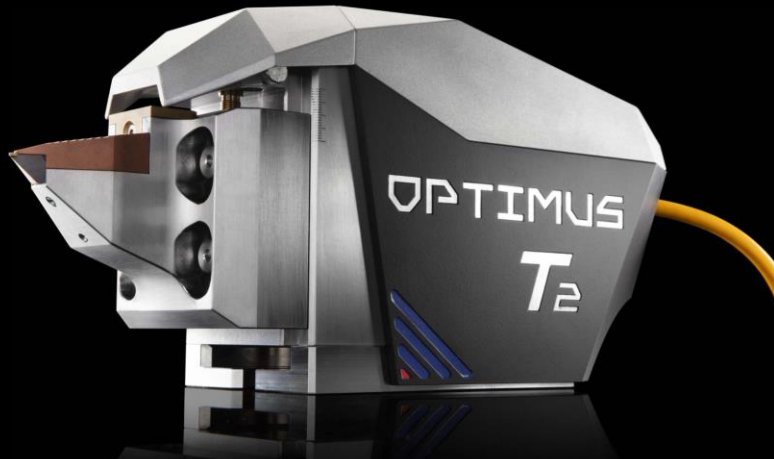


Advancing **Optical Manufacturing**



OUR BRANDS

OPTIMUS



Laser-Assisted
Machining



Ultra-Precision
Diamond Tools

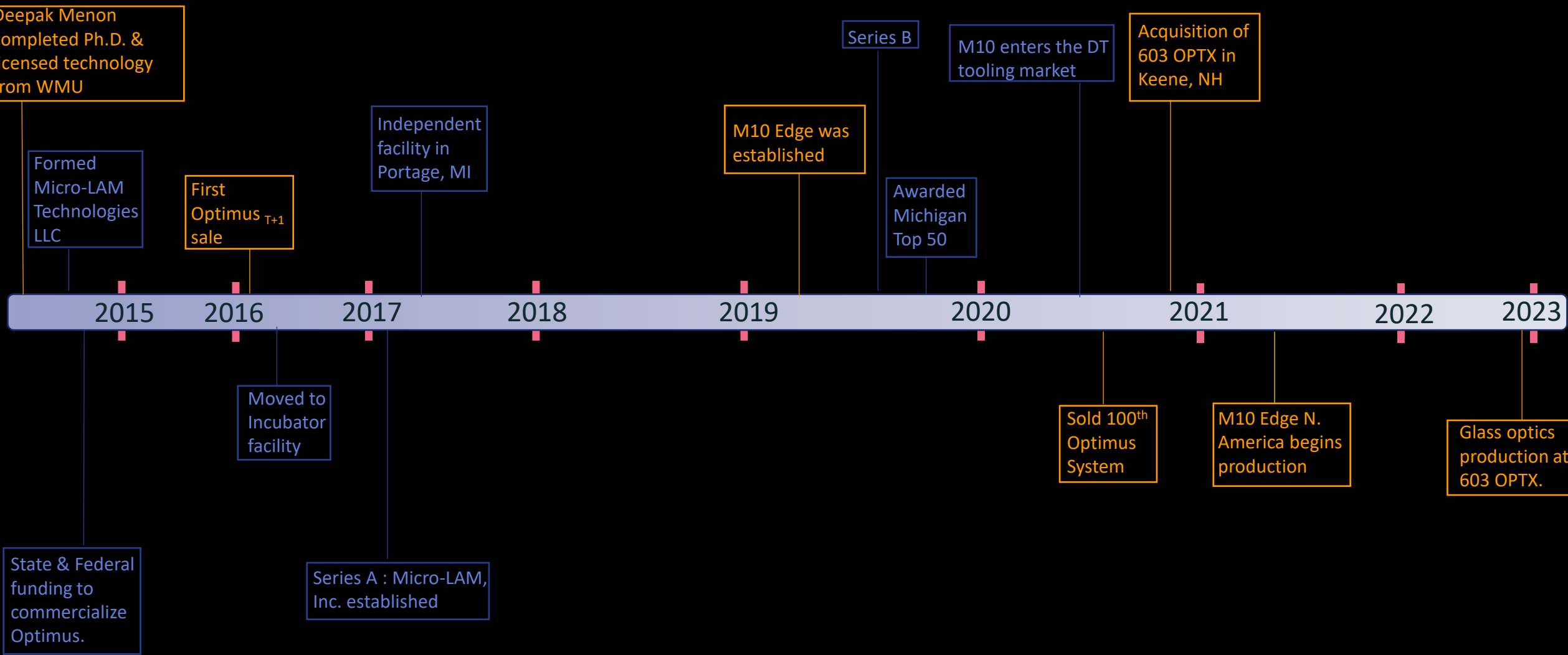
603 OPTX

A Micro-LAM Company



High-End Precision
Optics

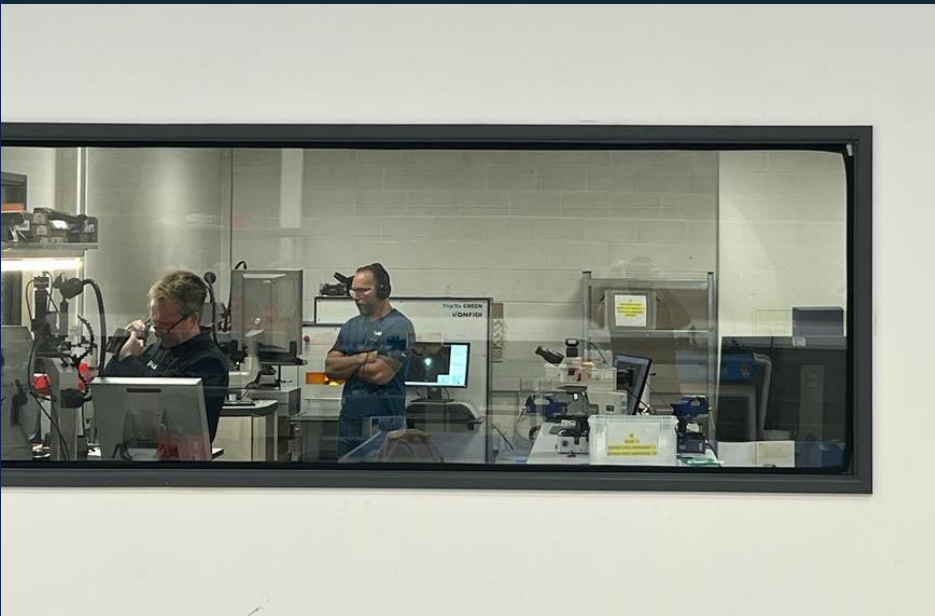
Key Milestones



M10 Edge Ltd. (Stevenage, UK)



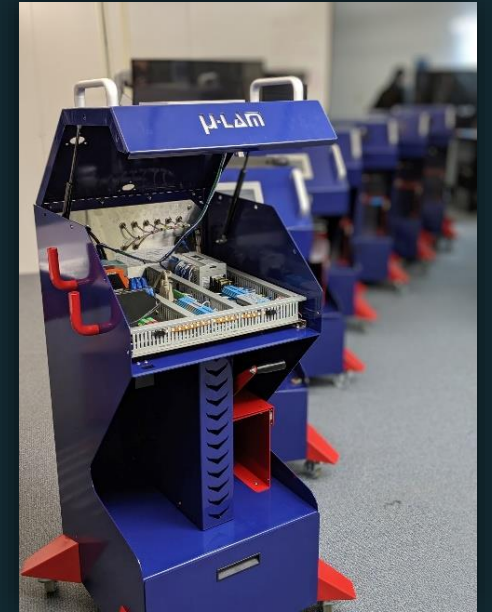
- Located 40 mins from London Heathrow.
- > 8,000 sqft. of manufacturing space with temperature-controlled lab.
- Team of 15 with over 120 years combined precision tooling experience.
- Executed from concept to full-scale manufacturing in less than 7 months.
- Current capacity: >8,000 tools per year.



- > 8,000 sqft. of manufacturing space with temperature-controlled lab.
- Team of 22 with over 150 years combined diamond turning experience.
- Specializing in complex optics with 2,3 and 5 axis machining capabilities.



Micro-LAM, Inc. (Portage, MI)



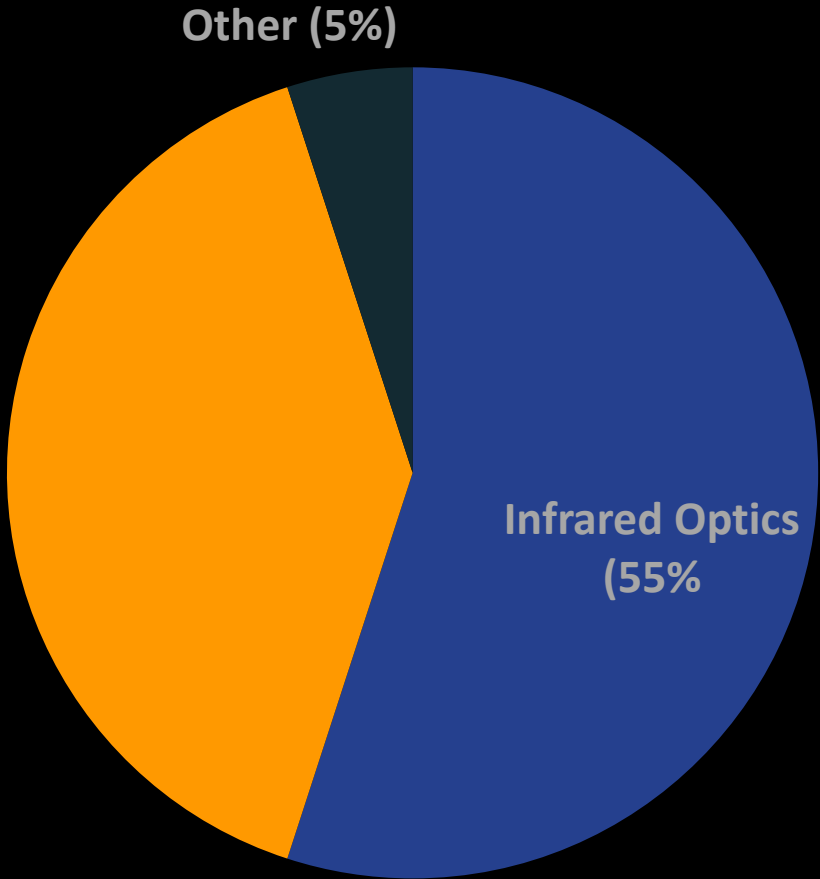
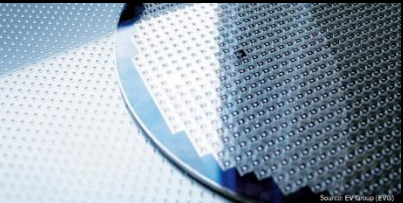
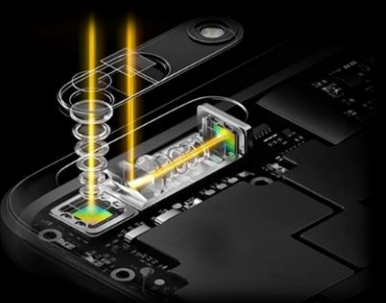
- > 25,000 sqft. with dedicated manufacturing space, R&D and Applications labs.
- 30 Team Members on-site, Sales Team of 6 in US and Europe
- Innovations, Engineering & Production teams support all global business segments.
- Customer training center with diamond turning & metrology capability.
- Diamond tooling and Precision Optics production capabilities.

Coming Soon in Portage, MI: Apr-2024



- > 30,000 sqft. to accommodate growth in various business segments.
 - Isolated manufacturing floor to eliminate external vibrations.
- Scale up on Precision Optics manufacturing & Ultra-Precision Diamond Tools manufacturing.
- HQ will have a world class customer training and experience center.
- Education & training programs for Precision Optics manufacturing.

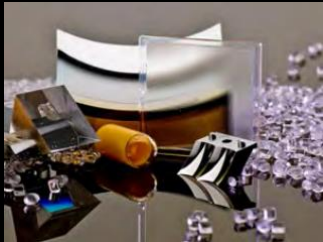
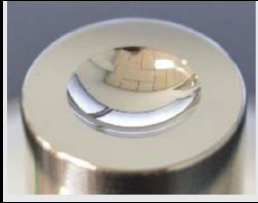
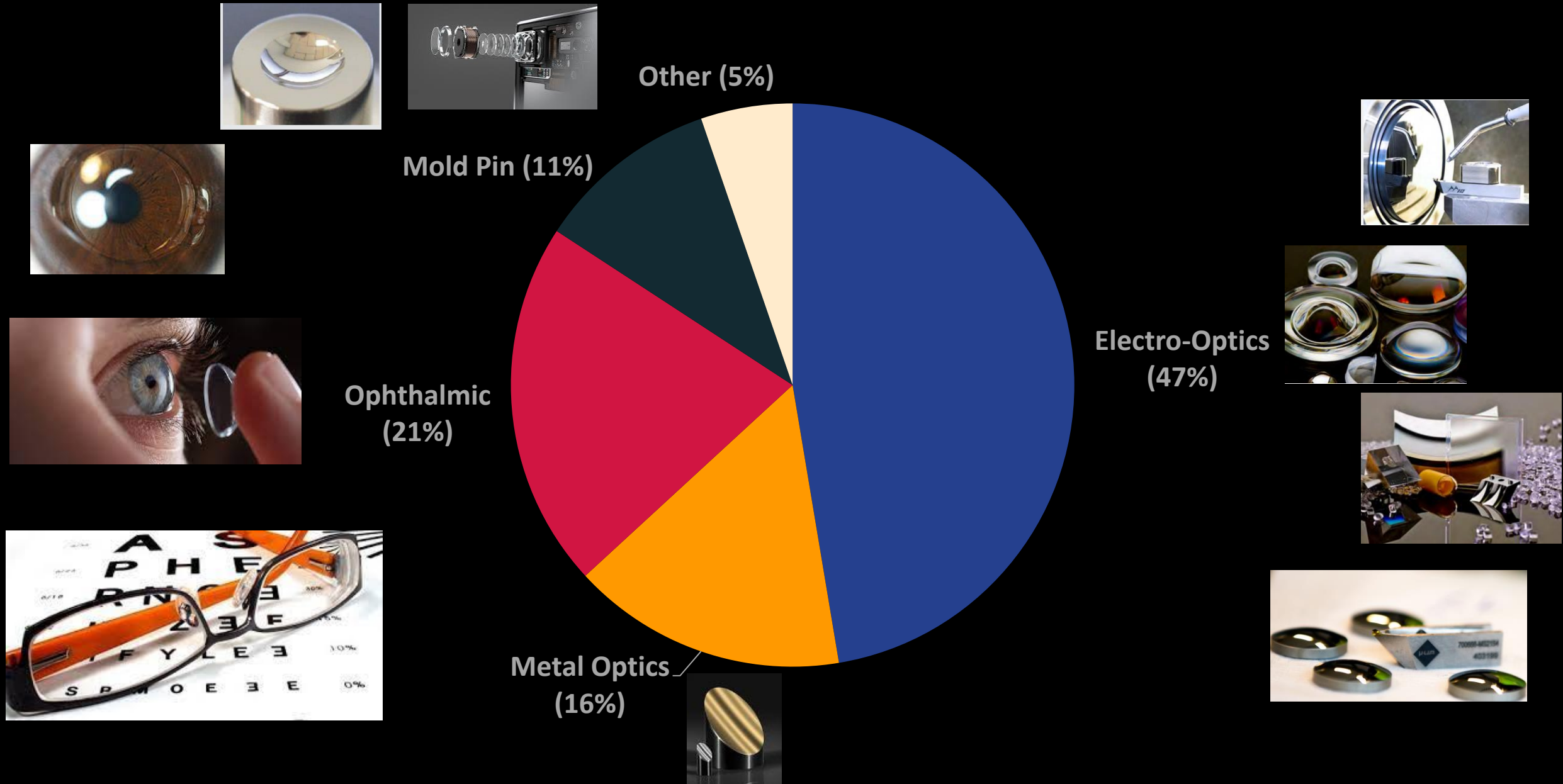
Current Markets for Laser-Assisted Machining



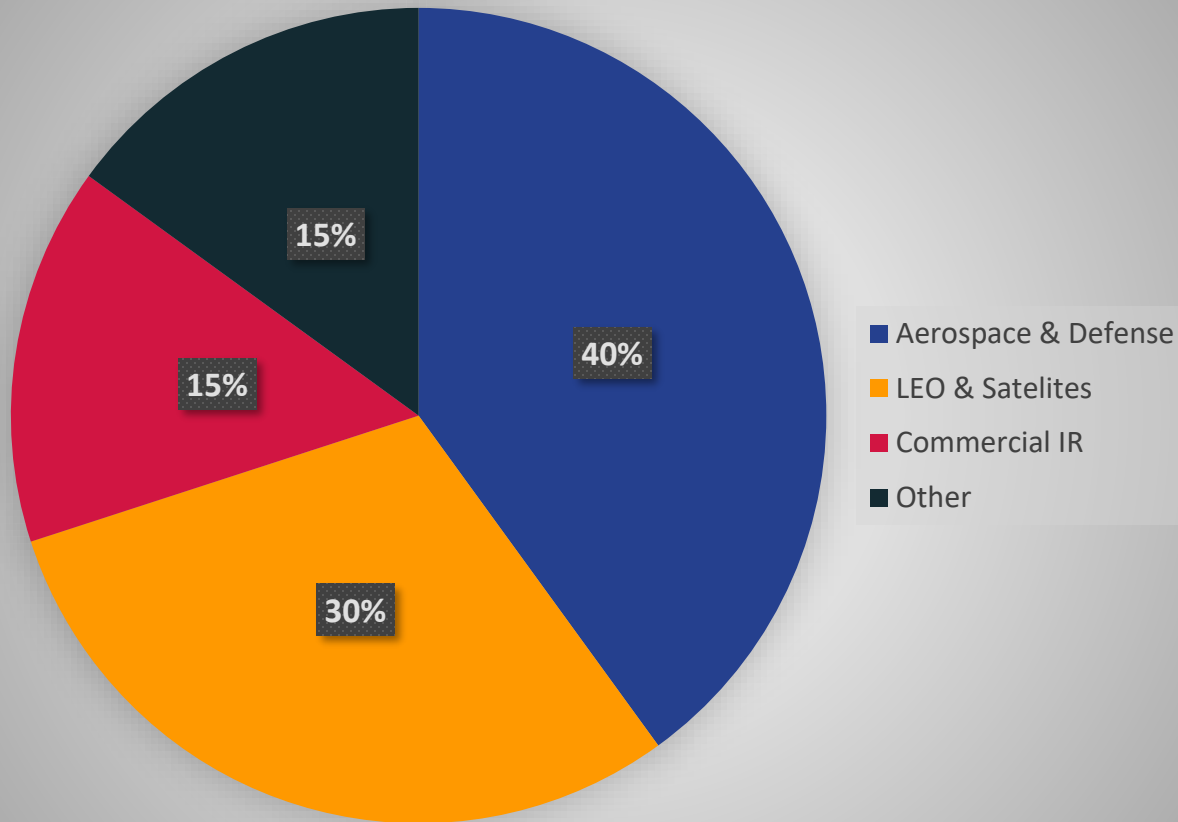
> 150 systems installed in 23 countries



Current Markets for M10 Tooling

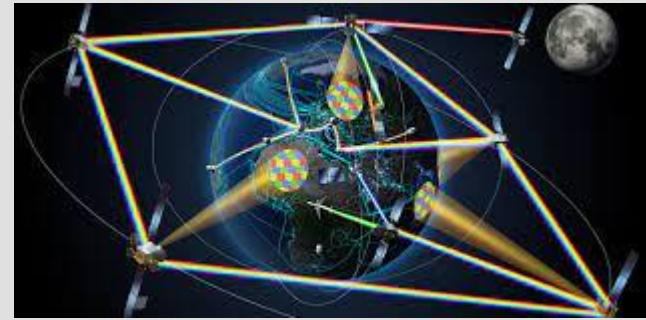


Current Markets for 603 OPTX



VALUE ADDED MARKET: LOW EARTH ORBIT & SPACE OPTICS

Micro-LAM's space optics business for has grown 300% over the last 12-months



MICRO-LAM & MICHIGAN WORKS! SOUTHWEST

Grant History

Year	Amount	Grant Name
2021	\$3,450	GoingPRO
2022	\$3,000	GoingPRO
2023	\$2,900	GoingPRO
2023	\$1,800	BC Manufacturing Collaborative
2024	\$6,680	GoingPRO

2024 Use of Funds

Training Area	Provider	Amount
Solidworks Advanced Training	GoEngineer	\$ 1,995
Lathe Live Tooling	Axsys Inc.	\$ 550
A3 Problem Solving (2)	Mich. Mfg. Technology Center	\$ 800
5S and Visual Mgt.	Mich. Mfg. Technology Center	\$ 295
ISO Auditor Training	Mich. Mfg. Technology Center	\$ 995
ISO Lead Auditor Training	Mich. Mfg. Technology Center	\$ 1,195
Advanced Multi-Axis Machining	Axsys Inc.	\$ 850

TOTAL \$ 6,680

ORGANIZATIONAL DEVELOPMENT

Employee Engagement Initiatives:

- AIM (All Ideas Matter) – Encourage and recognize and employee suggestions
 - Monthly review by key management committee
 - Timely feedback to employees
- ML – Excel – Internal Scholarship Program
 - Encourage employees to develop new skills
 - Increase cross functional training and capabilities
 - Reward employees for learning
- Cultural Accelerator Survey
 - Meet with employees at each location to measure engagement
 - Develop an action plan for each location based on results
 - Continue to improve focus areas for previous survey including:
 - Internal communications
 - Compensation strategy and planning



MICRO-LAM, INC.

MICRO-LAM, Inc. 5960 S. Sprinkle Rd., Portage, MI USA | www.micro-lam.com | +1 (269) 288-4100